



Accommodation Sheet

General information

Accommodation Name	HOTEL REGINA
Typology	Hotel/Inn
Address	Via Torino, 6
City	Forte dei Marmi (Lu)
Contacts	Tel. +39 0584.787451 - info@hotelreginafortedeimarmi.it
Website	https://www.hotelreginafortedeimarmi.it/en/
Accessible website compliant with WCAG 2.1	NO
Online bookings	YES
Short description	The Hotel Regina is located near the Forte dei Marmi seafront (100 metres, with 2 roads crossed via pedestrian crossings).

TESTED AND REVIEWED BY: [Handy Superabile Social Promotion Association](#) in 2024

Please note The following information refers to the verification date reported at the bottom of each sheet. The Association is not responsible for any significant changes made by the facility after the visit.





Summary

Accommodation Sheet.....	1
General information	1
Arrival at the facility.....	3
How to reach the property.....	3
Pathway from private/public parking to the entrance	4
Entrance to the building	5
Hall - Reception	6
Rooms/apartments	7
Rooms/apartments adapted for guests with reduced mobility.....	7
Toilet in the guest room for people with reduced mobility	9
Bar/Restaurant.....	10
Internal pathways and common services	13
Common toilets.....	13
Recreational activities	14
Play area and mini club for children.....	14
Solarium, terrace and kneipp course	15
Medical offices/healthcare facilities.....	16





Arrival at the facility

How to reach the property

By car	A12 motorway and Florence - Sea, Versilia exit (distance from Hotel Regina km. 3)
By plane	<p>At Pisa International Airport (PSA) the boarding/disembarking of passengers with reduced mobility is carried out with an ambulift, a special vehicle equipped with a ramp - mobile lounge - with a lifting platform to facilitate the boarding of passengers in wheelchairs; they are also guaranteed complete assistance, on departure/arrival. Assistance staff is available to accompany the disabled passenger, during baggage delivery, up to the boarding gate or baggage claim.</p> <p>The terminal is equipped with elevators with external and internal Braille buttons and "assistance call" columns (see photo above right). The security checkpoints are designed to accommodate passengers in wheelchairs and those with pacemakers. In the external and internal routes there are LOGES routes complete with tactile maps to facilitate the movement of blind and visually impaired people (see photo below left).</p>
Assistance service for people with disabilities	YES
Boarding/disembarking of passengers with reduced mobility	with courtesy chair and ambulift/finger
Tactile paths for the blind and visually impaired	YES
There is an accessible toilet with support handles	YES





By train	
Notes	Train station. Querceta / Seravezza (distance from Hotel Regina km. 5) and does not provide assistance service for passengers with disabilities while this service is available at the stations of Massa and Viareggio, 11 and 18 km away respectively.



Pathway from private/public parking to the entrance

Presence of private parking	YES
Presence of parking space reserved for disabled people	NO
Type of private parking flooring	gravel
Public parking nearby	YES
Type of public parking pavement	asphalt
Presence of parking space reserved for disabled people in public parking	NO





Entrance to the building

There is an accessible entrance	YES secondary entrance
How to access the facility	From the parking lot overcoming a ramp with a 4% slope. This is the only route accessible to wheelchair users.
Type of entrance door	to door
Usable width of door/entrance opening	88 cm
There are indicators and tactile maps	NO
	





Hall - Reception

How to get there from the entrance	on the flat
Reception desk height	with lowered bench part less than 100 cm
Presence of multilingual staff	YES
Type of information material	<input type="checkbox"/> YES with tactile maps/signs <input checked="" type="checkbox"/> YES with brochure
Initial assistance is provided for visitors with disabilities	<input type="checkbox"/> YES with orientation tour of the structure <input type="checkbox"/> YES with accompaniment to the room <input type="checkbox"/> YES with portage service
The following aids are provided for visitors with disabilities	<input type="checkbox"/> manual wheelchair <input type="checkbox"/> crutches <input type="checkbox"/> comfortable shower chair
The staff has attended a training course on welcoming people with different disabilities	NO





Rooms/apartments

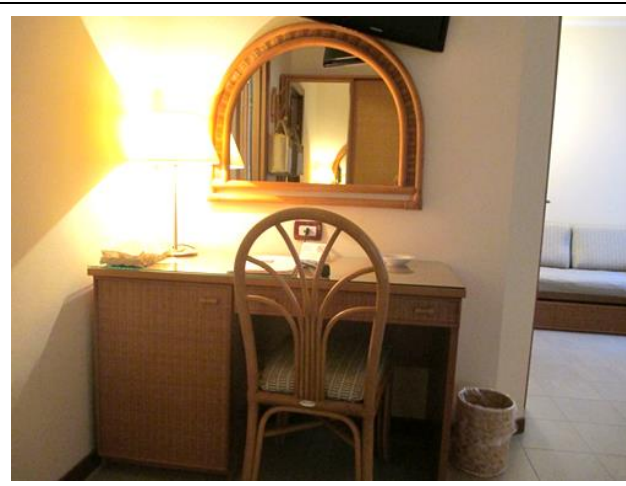
Rooms/apartments adapted for guests with reduced mobility

Number and type of rooms/apartments equipped/usable by people with reduced mobility	<input checked="" type="checkbox"/> triple rooms 2 num.
Access to the room	<input checked="" type="checkbox"/> via elevator door width 78 cm, cabin width 109 cm, cabin depth 140 cm, call button height 121 cm, height of highest button on keypad, raised/braille keys
Type of entrance door	with lever handle
Usable width of entrance door	82 cm
Bed type and height	60cm high double bed
Free spaces on the sides of the bed	left 70 cm To the right 90 cm front 90 cm
Cabinet type	with sliding doors





Free space under the desk	62 cm
They are available in the room	<input type="checkbox"/> safe <input type="checkbox"/> mini-bar <input type="checkbox"/> water boiler <input type="checkbox"/> iron
Any notes	<p>The room visited is the familiar Tradition n° 227 reachable by lift, located on the 2nd floor; room surface area 21.60 m2 (bathroom excluded)</p> <p>The room can be set up as a triple or family room if necessary (the sofa already present in the room is prepared as a bed and a fourth bed is placed in a special space).</p> <p>The room not visited is the triple Tradition n° 106; reachable by lift, it is located on the first floor; room surface 15.20 m2 (bathroom excluded); usable width of the door 82 cm (door that opens towards the corridor).</p> <p>The room has a different furniture arrangement, but the room and bathroom furnishings and equipment are similar to those presented above. The room can be set up as a triple if necessary (the sofa already present in the room is prepared as a bed).</p>







Toilet in the guest room for people with reduced mobility

Access to the premises	on the flat
Usable width of entrance door	64 cm
Door type	Choose an item.
Handle type	Choose an item.
Toilet height	48 cm
Toilet seat with open front tooth	YES
Support handles	to the right of the toilet
Flexible shower head next to the toilet	YES
Free space on the sides of the toilet	left 90 cm To the right 22 cm front 44 cm
Electric bell/telephone next to toilet	NO
Sink with space underneath for wheelchair access	70 cm
Height from ground to lower edge of mirror	not sufficient for use by a person in a wheelchair







	
Shower accessible to guests with reduced mobility available	YES floor level
Shower type	with box size 80 cm X 80 cm
Shower chair	missing
Support handle	NO
Presence of shower head or shower rail	up and down with lowest point reachable by a seated person
Shower side electric bell/telephone	YES

Bar/Restaurant

Type of premises	Bar/Restaurant
Access to the premises	<input checked="" type="checkbox"/> on the flat
Usable width of door/entrance opening	greater than 90 cm
Bar counter height	greater than 100 cm
Buffet counter height	Choose an item.
Type of tables	with central support
Space under the floor tables	Various sizes. 66cm, 71.5cm and 73.5cm
Availability of high chairs for babies	Not detected





Multilingual menu	not detected
Menu with app	NO
Braille menu	NO
Table service for people with disabilities	YES
Availability of food for celiacs	<input checked="" type="checkbox"/> bread <input checked="" type="checkbox"/> pasta <input checked="" type="checkbox"/> cookies <input checked="" type="checkbox"/> ice creams <input checked="" type="checkbox"/> pre-packaged foods
There are coffee and milk dispensers	NO table service is available
It is possible to always reserve the same table for a customer with reduced mobility	YES
There are toilets that can be used by a guest with reduced mobility (see “accessible toilets in internal routes and common services)	YES
There is a reserved area for lunch for little guests	NO
A fully equipped bottle-feeding service is available	Not detected
	





The venue has a veranda/outdoor terrace

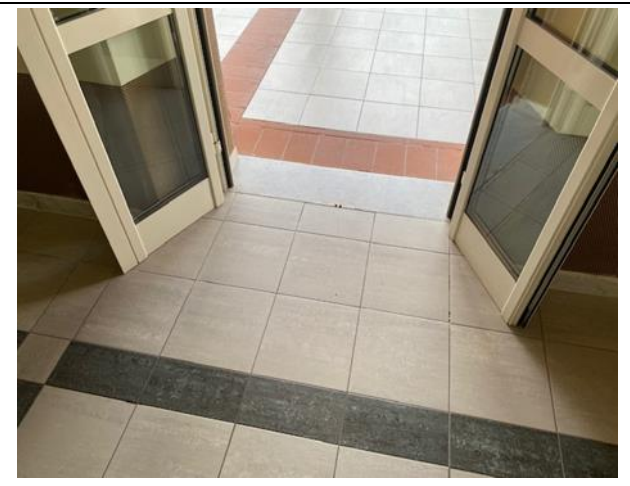
YES with 1 step 2 cm high

Type of tables

with central support

Space under the floor tables

Same restaurant/bar dimensions





Internal pathways and common services

Common toilets

Location of the premises	near the main restaurant
How to access the premises	on the flat
Usable width of entrance door	80 cm
Door type	sliding
Handle type	Choose an item.
Toilet height	48 cm
Toilet seat with open front tooth	YES
Support handles	to the right of the toilet
Flexible shower head next to the toilet	YES without thermostat
Free space on the sides of the toilet	leftgreater than 90 cm To the right22 cm front44 cm
Electric bell/telephone next to toilet	NO
Sink with space underneath for wheelchair access	70 cm
Height from ground to lower edge of mirror	not sufficient for use by a person in a wheelchair
Baby changing table	YES





Recreational activities

Play area and mini club for children

There is a mini club in the structure	YES
Any notes	Library and children's area. A perfect place to rediscover the pleasure of reading and stimulate your creativity. Children will find an area dedicated to them here. Access by going down 3 steps of 18 cm each.





Solarium, Terrace, and Kneipp Path

<p>There are toilets nearby that are accessible to guests in wheelchairs. (see description in the Internal routes and common services section)</p>	<p>NO</p>
<p>Any notes</p>	<p>The terrace located on the first floor offers a space to enjoy the healthy sun rays, practice physical activity or relax at any time of the day. It is possible to admire the horizon surrounded by the delicacy and harmony of the Zen Garden, all while enjoying the well-being brought by the water massage of the Kneipp path.</p> <p>The first floor corridor, which leads to the terrace, can be reached by lift.</p> <p>The access door is 90 cm wide with a small difference in level of 2 cm (threshold).</p> <p>The Kneipp path is accessible via a ramp of 4 steps, each 18 cm high.</p>





Medical offices/healthcare facilities

Hospitals near the facility	Versilia Hospital Via Aurelia n. 335 - 55049 Lido di Camaiore LU Tel +39 0584 6051
Any dialysis facilities	Dialysis service at Croce Verde Viale Italice, corner of Via Risorgimento Tel. +39 0584 84013
Other health facilities	San Camillo Nursing Home Via Padre Ignazio da Carrara, 37, Vittoria Apuana Tel +39 05847391

